



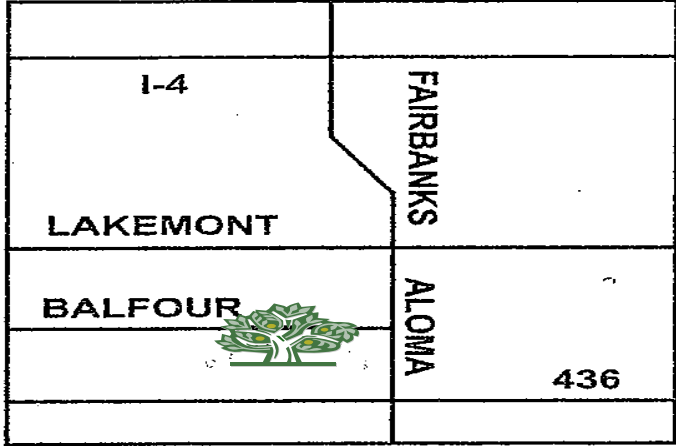
*Come home to a park-like setting that offers more and a community that provides unsurpassed amenities and services. We are within walking distance to the main shopping areas, post office, banks, bus-line, hospitals, and fine restaurants. Only minutes away from downtown Winter Park with it's splendid promenades, educational and fine arts center.*

RESIDENCE FEATURES

- Selection of One and Two Bedroom Garden Style Apartment Homes
- Individually Controlled Air Conditioning
- Wall-to-Wall Carpeting & Ceramic Tile
- Range & Refrigerator
- Cable Television Available
- Laundry Room Facilities
- 24 Hour Emergency Maintenance

COMMUNITY FEATURES

- Community Center
- Swimming Pool
- Playground Area
- Jacuzzi



DIRECTIONS:

**I-4 TO FAIRBANKS EXIT. FOLLOW FAIRBANKS UNTIL IT TURNS INTO ALOMA AND CONTINUE TO BALFOUR DRIVE AND TURN RIGHT AT THE LIGHT. WE WILL BE AHEAD ON YOUR RIGHT.**



**Professionally Managed By:  
Cambridge Management Services Inc.**



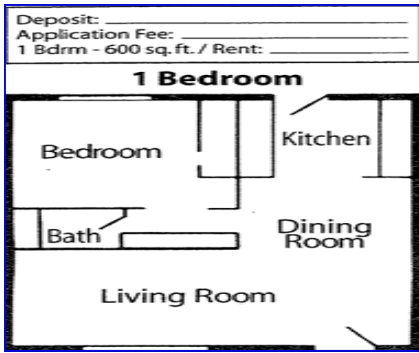
*“A Place To Call Home”*



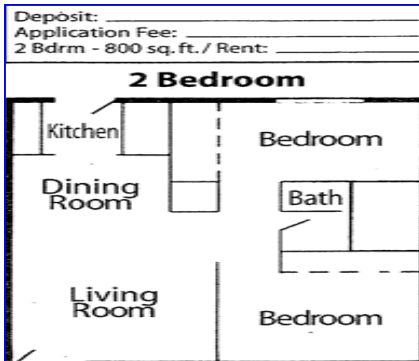
*Office Hours  
Mon–Fri 8:30 to 5:30  
Sat by Appt Only  
Sun – Closed*

*325 Balfour Drive  
Winter Park, Florida 32792*

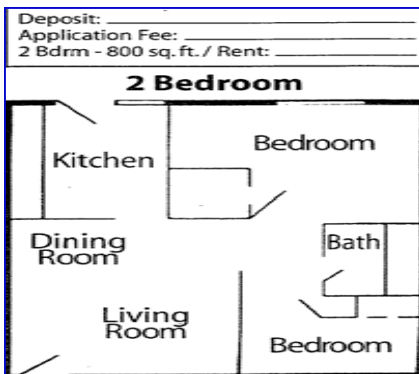
Phone: (407) 671-9696  
Fax: (407) 671-1712



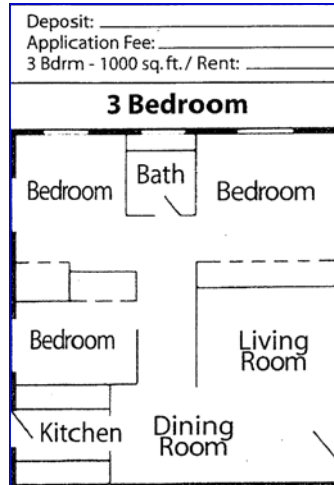
PHASE 1



PHASE 1



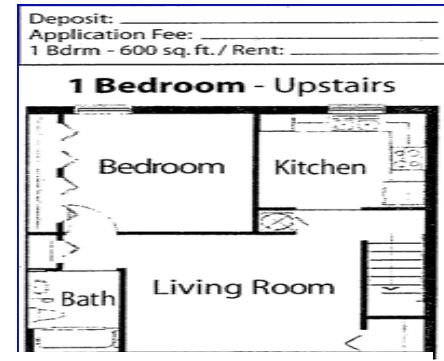
PHASE 1



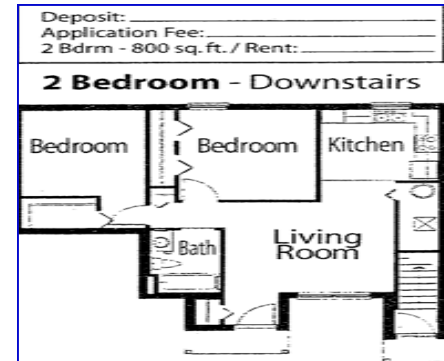
PHASE 1



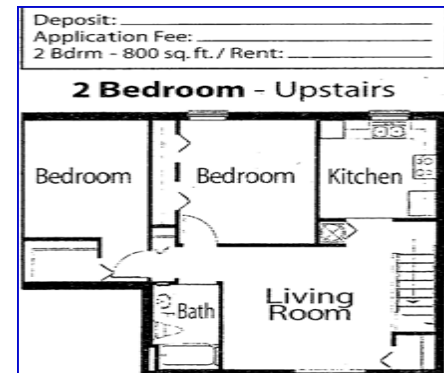
PHASE 2



PHASE 2



PHASE 2



PHASE 2