



PRESS RELEASE

For Immediate Release:

Media Contact: Craig M. O'Neil 407-599-3506 or cell 321-303-2653

CITY CELEBRATES FLORIDA BIKE MONTH

Bike from Park to Park



CITY OF WINTER PARK

401 Park Avenue South

Winter Park, Florida

32789-4386

WINTER PARK, Fla. an internationally recognized ICMA Excellence Award winner (March 2, 2010) - Governor Charlie Crist has proclaimed March as Florida Bicycle Month and the City of Winter Park Pedestrian & Bicycle Advisory Board will celebrate by hosting the **2nd annual *Bike from Park to Park on Friday, March 26, at 8 a.m.*** Bicyclists will begin their ride through scenic Winter Park at Mead Garden, located at 1300 South Denning Drive, and will conclude in Central Park's West Meadow with refreshments courtesy of Panera Bread. *Bike from Park to Park* supports the mission to promote a viable and safe pedestrian-and bicycle-friendly infrastructure.

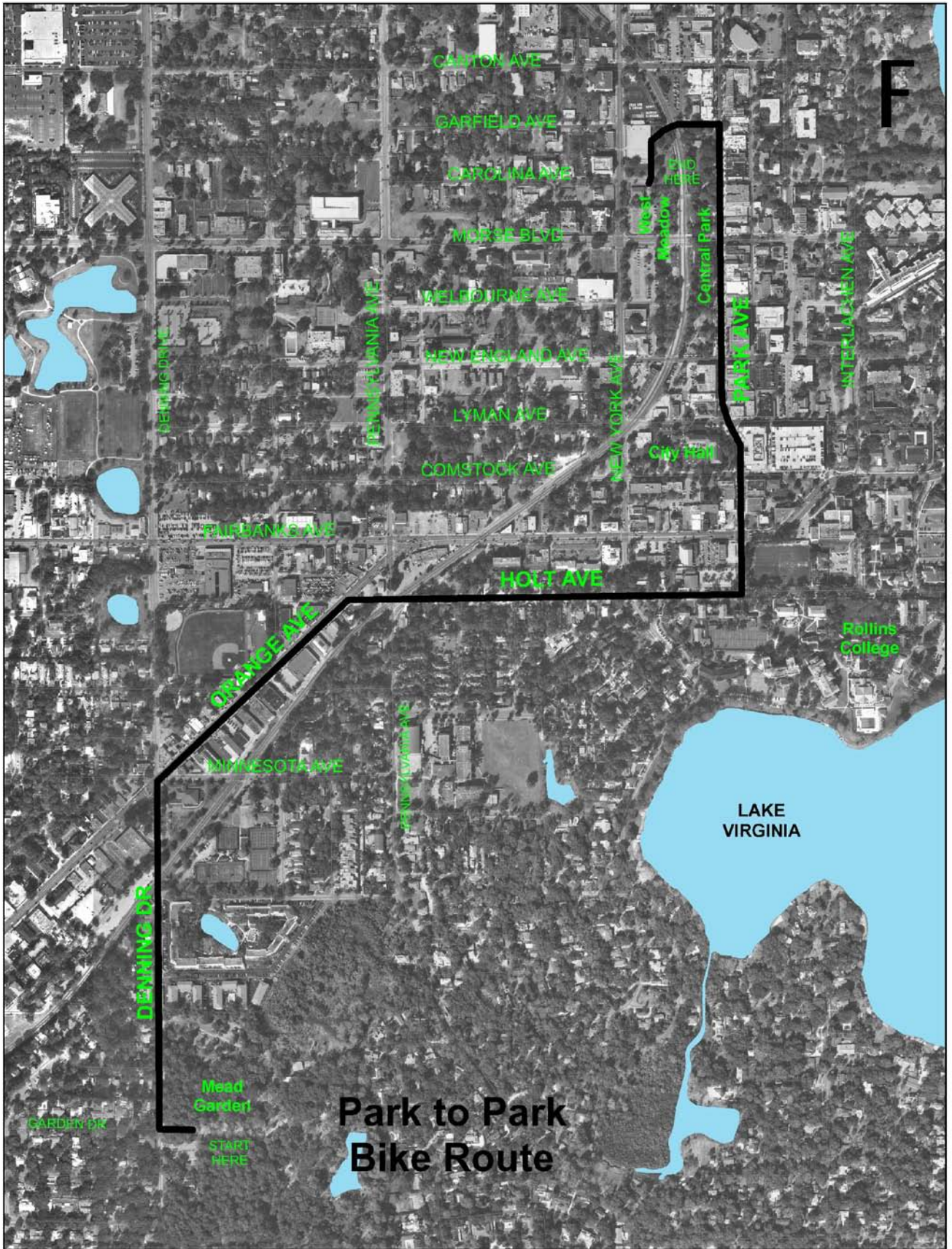
The City of Winter Park's "Green Local Government" initiative is an environmental action agenda designed to transform Winter Park into one of the most conservational cities in America by encouraging environmentally-friendly lifestyles through alternative transportation modes, such as bicycling. Today, millions of Americans engage in bicycling because it is a viable form of transportation, an excellent form of fitness, and it provides quality family recreation.

Investing in road improvements such as bicycle lanes, bicycles routes, off-road trails and bicycle parking to enable safe access for all users are all ways the city encourages bicycling. *Bike from Park to Park* is an additional way to encourage and promote alternate forms of transportation. A map of the complete event route is on the following page.

Those interested in participating in this exciting, green event are asked to please RSVP by **Tuesday, March 23**, via e-mail at trafficguy@cityofwinterpark.org or by calling 407-599-3233.

For information regarding additional events in the City of Winter Park, please visit the city's official Web site at www.cityofwinterpark.org.

###



Park to Park Bike Route

ORANGE AVE

LAKE VIRGINIA

F

Mead Garden
START HERE

West Meadow
END HERE

Rollins College

City Hall

CANTON AVE

GARFIELD AVE

CAROLINA AVE

MORSE BLVD

MELBOURNE AVE

NEW ENGLAND AVE

LYMAN AVE

COMSTOCK AVE

HOLT AVE

MINNESOTA AVE

DENNING DR

PENNSYLVANIA AVE

NEW YORK AVE

PARK AVE

INTERLACHEN AVE

BEHRING DR

GARDEN DR

THE NINE COURTESY AVE

CENTRAL PARK