



**bright
house**
NETWORKS



Winter Park and Bright House Networks™ Metro-Wireless Network (Wi-Fi) Connection Instructions

Bright House Networks™ customers

- Free, unlimited access - 24 hours a day, 7 days a week

Non-Bright House Networks™ Road Runner™ customers

Free service:

- Requires a Wi-Fi enabled device (laptop, computer, PDA or phone).
- Available for two hours each day beginning at midnight. The two-hour time block is contiguous from the point of sign-on and is not available in portions.

Pay-per-use:

- Pay-per-use service is available once free service time limits have been reached. Pay schedule is as follows:
 - \$1.95 per hour
 - \$4.95 per day (24 contiguous hours from start of service)
 - \$14.95 per week (Seven contiguous 24 hour days from the start of service)

All major credit cards are accepted.

How to connect to the Internet:

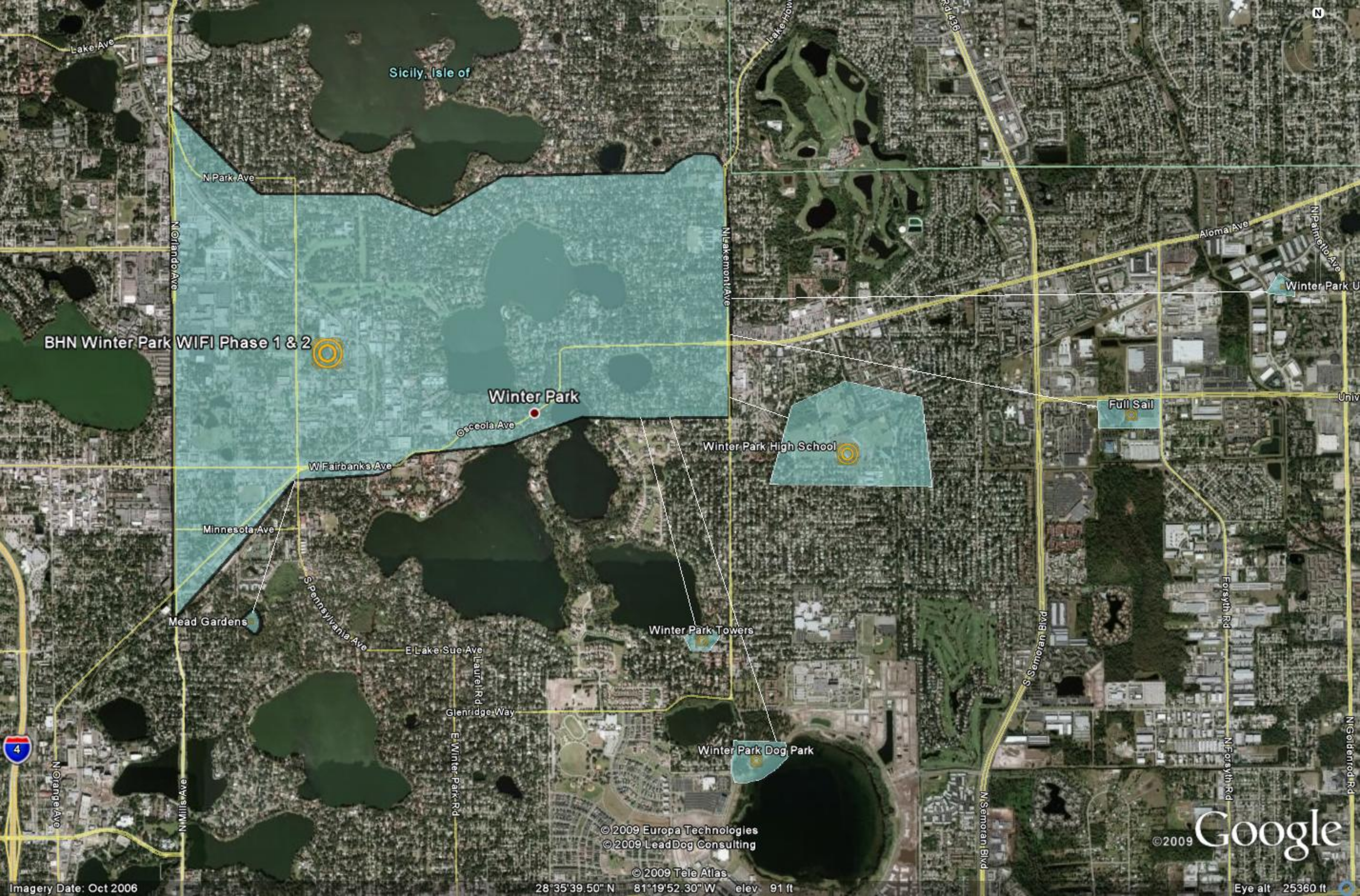
Bright House Networks™ Road Runner™ customers:

- 1) Once you are in range of the signal, associate your Wi-Fi enabled device to the network.
- 2) Launch your internet web browser. Be sure to disable any script blocking utilities.
- 3) Click on the "Road Runners Users" link in the lower left portion of the log-in screen.
- 4) Enter the username and password from your @cfl.rr.com email address.
- 5) Enjoy unlimited connectivity with no time limits!

Non-Bright House Networks™ Road Runner™ customers:

- 1) Once you are in range of the signal, associate your laptop to the network.
 - Broadcast network name (SSID): "**MyBrightHouse**". This network will appear in the list of available wireless networks when you are in range of the signal. No encryption is required to connect.
- 2) Once connected to the network, launch your Internet Web browser.
 - You will be redirected to the City of Winter Park portal page to register for the service (free, pay-per-use or weekly).
- 3) The **name and password** you select will become your user credentials each time you access the system.
 - User sessions will time out after one hour of inactivity.
 - Usernames *and* passwords are case sensitive.

**For questions or problems regarding connection to the Wi-Fi service,
call Bright House Networks Customer Service at 888-205-2160.**



BHN Winter Park WIFI Phase 1 & 2

Winter Park

Winter Park High School

Winter Park Towers

Winter Park Dog Park

© 2009 Europa Technologies
© 2009 LeadDog Consulting

© 2009 Tele Atlas

28°35'39.50" N 81°19'52.30" W elev 91 ft

© 2009 Google

Eye alt 25360 ft

Imagery Date: Oct 2006

Sicily, Isle of

N Park Ave

N Orlando Ave

N Lakemont Ave

Aloma Ave

Winter Park U

Full Sail

Osceola Ave

W Fairbanks Ave

Minnesota Ave

Mead Gardens

S Pennsylvania Ave

E Lake Sue Ave

Laurel Rd

Glenridge Way

E Winter Park Rd

Winter Park Dog Park

S Semoran Blvd

Forsyth Rd

N Semoran Blvd

N Forsyth Rd

N Goldenrod Rd

Lake Ave

Lake How

Rd 438

N Orange Ave

N Mills Ave

N Palmetto Ave

N Goldenrod Rd

N Forsyth Rd

N Goldenrod Rd

